

# LS651

## Laser Fat System

User manual



---

## Warning

Dear user:

Thanks for using our company's products, in order to fully make use of the products, we sincerely suggests follow:

- ◆◆ Please read the instruction in detail and keep it well for further reading and consulting.
- ◆◆ Please follow the instruction to fit and operate the machine correctly.
- ◆◆ Please do not remove and change any accessories of the machine.
- ◆◆ It forbids others to open and remove the mainframe except the authorized people in the company.
- ◆◆ It forbids others to change and maintain the machine except the professional people.
- ◆◆ Please contact us if there is any trouble during operation.

**This product does not belong to medical, please don't use for disease treatment!**

## Parts Introduction



1. LCD screen
2. Power supply line jack
3. General power switch
4. Laser 4-1 work head jack
5. Laser 4-2 work head jack
6. Laser 4-3 work head jack
7. Laser 4-4 work head jack
8. Laser 2-1 work head jack
9. Laser 2-2 work head jack

## Accessories



Laser 2X



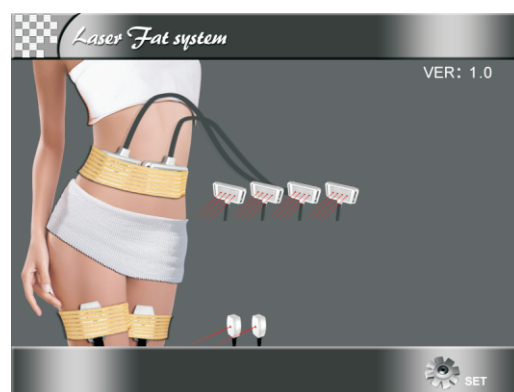
Laser 4X

## Basal Operation

1. Put the accessories well and connect them to the host.
  - (1) Insert Laser 4-1 work head to [4];
  - (2) Insert Laser 4-2 work head to [5];
  - (3) Insert Laser 4-3 work head to [6];
  - (4) Insert Laser 4-4 work head to [7];
  - (5) Insert Laser 2-1 work head to [8];
  - (6) Insert Laser 2-2 work head to [9];
2. Insert power supply line to [2], turn on the General power switch [3].
3. As (Fig 1) shows, input default Password "000000" to enter interface as (Fig 2).
4. Click any place on screen to enter function interface as (Fig 3) shows.



(Fig 1)



(Fig 2)

## Laser Function

### 1. Operation step of Laser 2X

- (1) Clean the skin, and according the treatment part to choose the suit band ties and tied them up.
- (2) Put the Laser 2X work heads into the band ties, the side with Led contact to skin directly.
- (3) Set intensity of every Laser 2X in interface (Fig 3) shows. the range is 1(weak)~3(strong).

Operation steps:

When the cursor "V" on the location "channel 1 1Hz", click "←" and "→" to set the intensity of laser, the range is 1HZ~1000HZ. OFF means that close channel 1.

Then move the cursor "V" to the "channel 2 1HZ", click "←" and "→" to set the intensity of laser, the range is 1HZ~1000HZ. OFF means that close channel 2. ....

- (4) Setting work time

Click "Time" to enter interface (Fig 4). Click "←" and "→" one time to change one minute, click the number of time directly to change ten minutes every time. 30 minutes of every treatment part.

- (5) click "⏏" to start work.



(Fig 3)



(Fig 4)

(6)The machine will pause automatically if the setting time is over. Beautician take the Laser 2X work head out and put them well, then loosen the band ties.

## 2.Operation step of Laser 4X

(1)Click the “Laser 4X” in interface (Fig 3) shows to enter interface (Fig 5).

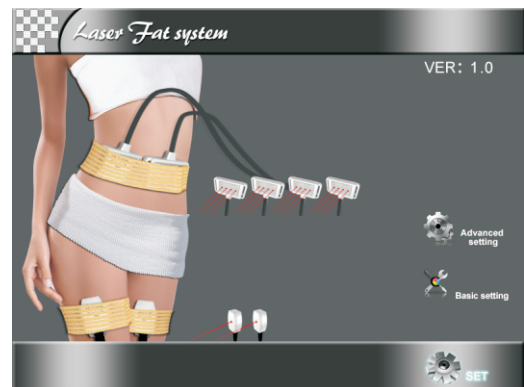
(2)The other steps please refer to “Laser 2X Function”.



**CAUTION LASER: Do not let the laser light straightly shine upon the eyes in Case of eyes hurt.**



(Fig 5)



(Fig 6)

## Others

Click “set” as the(Fig 1) shows. Enter interface as (Fig 8):

Click“ basic setting ”, enter the selecting language interface.

**Notes “advanced setting” is for manufacturer only.**

## Forbidden group

- 1.People with heart disease or high blood pressure, or configured cardiac pacemaker.
- 2.Patients with acute inflammation, asthma, deep vein thrombosis, thyroncus, cancer.
- 3.People with hemorrhagic disease, trauma or who is bleeding.
- 4.Pregnant women
- 5.Medical Plastic parts, or parts with artificial in filling inside.
- 6.People with metal inside the body(include metallic tooth)
- 7.Patient with skin inflammation or with edema.
- 8.People with an abnormal immune system.
- 9.Numb or insensitive to heat.

---

## Technical parameters

Input: AC110V/60Hz ☐ AC220V/50Hz☐

Power:  $\leq 50\text{VA}$

## Accessories list

1.Host	1set
2.Power supply line	1pc
3.User manual	1copy
4.Laser 2X work head	2pc
5.Laser 4X work head	4pc
6.Bind ties	1set
7.Accessory frame	1pc
8.Hexagonal screws	4pcs
9.Hexagon wrench	1pc